



MD

CANNABIS
AUTOMATION



**PROVIDING PACKAGING AUTOMATION AND
INSPECTION SOLUTIONS TO THE CANNABIS INDUSTRY**



WWW.CANNABISAUTOMATION.CA



LEADERS IN CANNABIS AUTOMATION!

MD Cannabis Automation is one of Canada's foremost distributors of product inspection and packaging automation solutions to the Cannabis industry.

We have positioned ourselves as the preferred partner for Canada's producers of medical and recreational cannabis products. Our solutions include labellers, induction sealers, scales, baggers, conveyors, liquid filling lines and product inspection tailored to the cannabis industry.

LABELLERS

Universal Labeling Systems is North America's largest manufacturer of made-to-order labeling machinery. Their line of standard and custom labeling systems are designed and built in St. Petersburg, Florida. With their own in-house design, fabrication, assembly, testing and parts facilities, they are a complete manufacturer of pressure sensitive labeling machinery.

R310 SEMI-AUTO FOR ROUNDS



Features:

- Roll-on labeling from ampules to gallons
- Quick and easy changeover
- The "roaming peeler", adjustment to support smaller diameter products like vials, markers and lip balms
- Foot switch activation

R321 ROUND PRODUCT LABELING



Features:

- Extra heavy duty system framework
- SL1500 stepper driven label applicator
- Product metering
- Label wrapping station
- NEMA 12 control enclosure with multilevel menu
- Optional synchronous round product labeling

R322 HIGH-SPEED ROUND PRODUCT LABELING



Features:

- Extra heavy duty system framework
- SL2000 stepper driven label applicator
- Product metering
- High speed label wrapping station
- NEMA 12 control enclosure with multilevel menu

R320 ROUND PRODUCT LABELING



Features:

- Extra heavy duty system framework
- L15 label applicator
- Product metering
- Label wrapping station
- NEMA 12 control enclosure
- Easy-to-use analog controls

INDUCTION SEALERS

Induction cap sealers create a hermetic induction seal that prevents bottles from leaking, provides tamper evidence and preserves product freshness. Enercon's induction sealers are the world's leading cap sealing brand. Enercon induction sealing technology has sealed over 50 billion containers around the planet. From manual hand held cap sealing to high performance production lines, Enercon offers the most diverse range of induction sealer technology on the market.

SUPER SEAL JR



Enercon's Super Seal Jr offers an unprecedented combination of sealing capability, portability, and production flexibility. This compact design is only 3" x 8.25" x 10.5" (76mm x 210mm x 267mm). It seals everything from the smallest closures to 120 mm wide-mouth containers.

Features:

- Advanced circuitry and Enercon's well-proven and ultra-reliable sealing head design
- Maximum sealing power from a small footprint
- Digital timer to ensure accurate sealing
- Missing foil indicator
- Batch counter

SUPER SEAL MAX



Enercon Super Seal Max is for packagers with the most demanding applications. This innovative system offers production speeds never before possible with air-cooled systems. It reliably seals containers at production speeds in excess of 300 feet per minute.

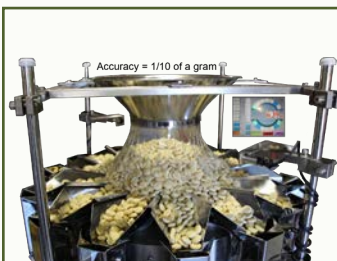
Features:

- Sets up in minutes: pre-programmed and fully integrated with sealer
- Touch screen control for inspection and rejection
- High sensitivity and responsiveness
- Portable design for maximum versatility
- LED bottle centering guide

SCALES

We provide high accuracy scale systems that are durable and consistently perform to guarantee uptime. We also use unique weighing processes which ensure no under or over-weights.

COMBINATION WEIGHERS & COUNTING SYSTEMS



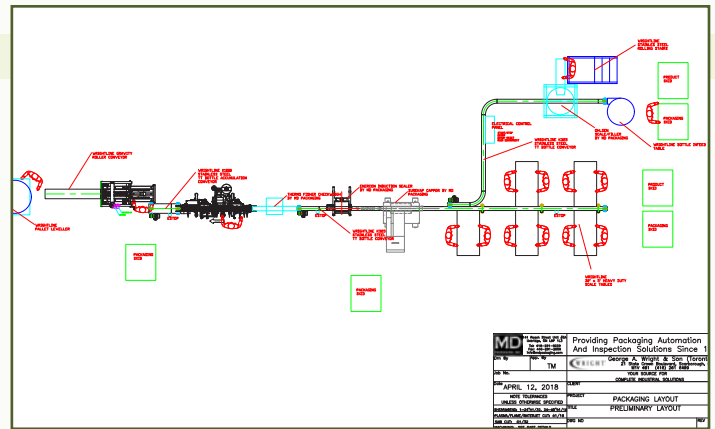
Combination Weighers and Counters are perfect for a wide array of high accuracy and high speed weighing and counting applications. They are easy to operate, clean and maintain. These systems will weigh/count your product and fill your containers with speeds up to 30-40 per minute and accuracies to a fraction of a gram. We are technology leaders in performance and reliability.

Features & Benefits:

- Drastically reduce product giveaway (load cell accuracy to 0.1 gram)
- Minimize product damage with clean, gentle handling
- Comply with weights and measurement standards and regulations
- Confirm both weight and count measurements in your packaging
- Highly sanitary - easy, tool-less parts removal
- Uptime rating near 100 percent maximizes your man hours and efficiency
- Easily programmable
- 99-program storage for quick changeover

SYSTEMS INTEGRATION

We work with specialized groups who provide Industrial Contracting services and systems integration work to customers in Canada and the United States. Services include plant decommissioning and relocation, installation of silos and tanks, the manufacturing of mezzanines, integration of packaging machinery, design and fabrication of electrical and control panels, bakery equipment, mixers, baking ovens, vertical form-fill seal equipment, overwrap machines, metal detectors, cartoners, check-weighing, case packers, tray packers, shrink bundlers and conveyor systems to name a few.



CONVEYORS

MD Cannabin Automation has developed specific material handling solutions for the cannabis industry. With customers throughout North America, we specialize in the design, manufacture and integration of primary custom and specialty stainless steel conveyor systems, secondary product handling conveyor systems, custom table top conveyors, 24V roller conveyor systems for case and tote processing and modular CDLR palletizing conveyor systems.



FILLERS

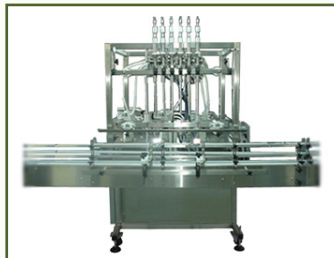
We represent a number of partners in both dry and liquid filling applications. Semi-automatic and Automatic scales as well as precision liquid filling technologies to suit all of your cannabis requirements.

PISTON FILLING MACHINE



Used primarily for thick viscous liquids and/or particulated products with limited changeovers. Examples include liquid soaps, cosmetics and heavy food sauces where positive displacement or high-pressure filling is required. Also excellent for volumetric filling of expensive products where high accuracy is needed. Higher capital cost but even small machines can produce very high output.

PERISTALTIC FILLING MACHINE



Used for small volume, accurate fills of ultra-clean or high-value liquids such as reagents, essential oils, pharma preparations and other applications where no cross contamination is permitted. Only low viscosity liquids can be used on this machine. The fluid path is disposable making cleanup very fast and efficient.

CAPPERS

We represent capping manufacturers who serve the market with low to medium speed, spindle style cappers to servo controlled high speed rotary units.

SK6000X-BF6



The SK6000X-BF6 is a fully automatic, inline, six spindle capper featuring an innovative belt feed system that eliminates vibratory bowls, overhead hopper loading and time consuming changeovers on a range of flat caps.

Features:

- Cap Alignment Cylinder
- Six spindles
- Two sets of clutches
- Non Vibratory Feeder
- Floor Level Loading
- Heavy duty drive system
- Easy changeover
- Handles 400, 410 and CRC caps from 38mm up to 120mm
- Small Footprint
- Stainless Steel Hopper
- Dust Covers maintain clean cap supply
- Heavy duty stainless steel frame

PRODUCT INSPECTION

Our product inspection systems provide you with the performance and service you need to improve the quality and safety of your products, help you eliminate errors and ensure the integrity of your brand.

NEXTGUARD CONVEYOR X-RAY DETECTION SYSTEM



Transition easily and quickly from metal detection to x-ray inspection with the versatile Thermo Scientific™ NextGuard™ Conveyor X-ray Detection System. The NextGuard system offers enhanced capabilities to inspect packaged products for missing pieces or components, under and over-fills, and other quality problems with easily customizable vision software.

Features & Benefits:

- Compact size makes installation and use easy
- Unique non-linear detector eliminates inspection blind spots
- Removable conveyor makes directional change and maintenance simple
- Software based on popular, intuitive VersaWeigh user interface
- Modular design for high reliability and quick diagnosis and repair
- Source and detector lifetime indicators to minimize expensive downtime
- Built-in remote monitoring for quick problem determination
- Field upgrade X-ray sources and detectors

SENTINEL MULTISCAN METAL DETECTOR



Overcome the limitations of fixed single or dual frequency metal detectors with the Thermo Scientific Sentinel Multiscan Metal Detector. By scanning up to five user-selectable frequencies running at a time, the Sentinel provides unmatched sensitivity and the highest probability of finding ferrous, non-ferrous and stainless steel metal contaminants in challenging applications such as dairy, meat, poultry, bread and other applications with high product effect.

Features & Benefits:

- Multiscan frequency flexibility to optimize performance in any application
- Easy-to-use touchscreen with set-up wizards to reduce set-up time
- Detailed graphical displays for phase, rejects, quality test and detection thresholds to enable easy fine tuning and troubleshooting
- IP69K for severe washdown and dust, eliminating repair costs
- All electronics are integral, so mounting is easy and flexible
- All balance functions are implemented in software, so no need for manual hardware rebalance in the field
- Wide ambient temperature range assuring reliability
- Fe, non-Fe and 316 SS test pieces included to fit specific application

VERSA RX CHECKWEIGHER



Meet the high performance standards of the pharmaceutical industry with the Thermo Scientific™ Versa RxV Marking and Verification Pharmaceutical Checkweigher for track and trace applications and the Versa Rx Pharmaceutical Checkweigher.

Features & Benefits:

- Flexibility – sachets, blister packs, cartons, plastic bottles, glass bottles, pouches, small aerosols
- High production rates
- Ultra high accuracy
- Easy to use
- Easy to maintain
- Sanitary design
- High accuracy to better than +/- 50 mg at 3 sigma
- Production line rates up to 550 ppm
- 21 CFR Part 11 Compliance Option
- Marking and Verification/Data Matrix optional
- Offers two types of conveyor systems – traditional taut-belt or slack-belt system
- Reject and Verification options

UNRIVALED SERVICE DEPARTMENT!

In addition to being a distributor of product inspection and packaging automation solutions, we also offer many other services!

SERVICE

We have factory trained technical managers from coast to coast. In addition to servicing equipment we sell, we also service competitive equipment.



CALIBRATIONS

We have been performing dynamic scale calibrations since 1989.



PARTS

We have an extensive inventory of spare parts and can source ANY part you need!



PREVENTATIVE MAINTENANCE

We offer extensive PM programs with optional inclusion of wear/tear parts.



CERTIFICATIONS

We offer metal detection, x-ray and checkweigher certifications.



RENTALS

We stock various sizes of Thermo metal detectors, x-ray systems and checkweighers.

Rentals available on a daily, weekly or monthly basis.



EMERGENCY RE-WORK PROGRAM

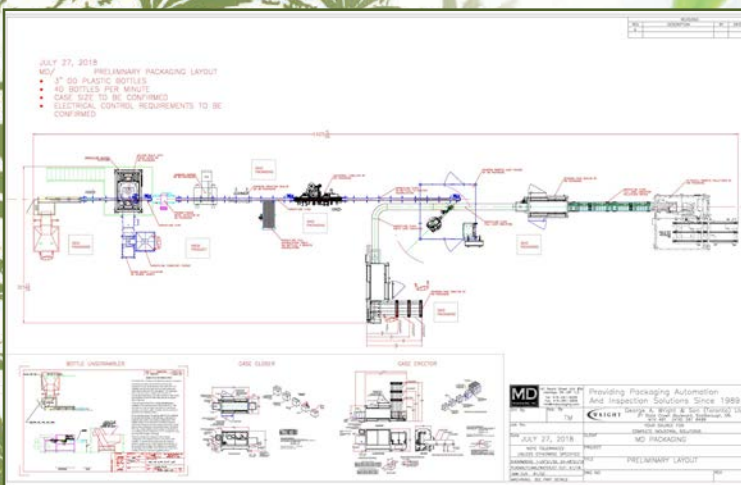
With our flexible program, we can deliver equipment to you with our technical expertise or depending on your product, you can ship to our facilities.

We offer special pricing for preventative maintenance plans or programs.

In addition, we also offer plant-wide service plans. Contact our service department for more info at
416-291-9229 OR INFO@CANNABISAUTOMATION.CA



A close-up, low-angle shot of a cannabis plant. The image features several large, serrated green leaves with prominent veins, some showing signs of being eaten (small holes). A small, developing bud is visible in the center. The background is a bright, slightly blurred white. Overlaid on the top left is a dark rectangular box containing the text "SAMPLE CANNABIS LINE LAYOUTS" in a bold, black, sans-serif font.





Every project, large or small receives the full attention of our dedicated team of packaging professionals to help you, our customer, meet your objectives! As a truly full service organization, MD Cannabis Automation provides national representation for many of North America's and Europe's premier manufacturers of inspection and automation solutions through our regional offices in Toronto, Montreal, Calgary and Vancouver. A comprehensive in-house parts and service department with factory trained technicians support our customers during and after installation to ensure they achieve the best machine efficiencies in the market today and tomorrow.

Operating from our 7400 sq. ft. head office facility located in Uxbridge, Ontario, MD Cannabis Automation provides comprehensive sales, parts and service support to our national base of customers. Our modern showroom is available to demonstrate many of the most popular and technologically advanced packaging equipment solutions available in the market today. With branch offices located in Montreal, Calgary, Ottawa and Vancouver, we provide a level of sales and service support unequalled in the market today. Call today to arrange an appointment to discuss your automation/inspection requirements.

**141 Reach Street
Unit #5A
Uxbridge, ON L9P 1L3**

**Tel: 416-291-9229 • Fax: 416-291-2906
info@cannabisautomation.ca**

www.cannabisautomation.ca